

# **Grasmere Parish Magazine**



**December 2024 - January 2025**

## **MAGAZINE INFORMATION**

### **Editorial Policy**

Grasmere Parish Magazine is produced bi-monthly by St. Oswald's PCC and is sponsored by Wordsworth Grasmere. The name of the author appears by each item and the views expressed are those of the author. The Magazine is produced by St. Oswald's PCC on behalf of the community. The Editors and PCC reserve the right to use their discretion in finalising the content. Our policy and copyright notices are available at **oswaldparish.news**

### **Copy Date**

Copy date for the **February - March 2025** magazine is **18th January**. Please email copy to **editor@oswaldparish.news**

Please submit copy in a Word document, using Calibri font with 11pt and in A5 size. Past editions are available on our website: **oswaldparish.news**

### **Advertising in the Magazine**

To advertise in the magazine please contact the Editors:

**Ann and David Jackman - editor@oswaldparish.news**

Apologies in advance for any errors or omissions.

## From St Oswald's

You might hear people speak of the “magic” of Christmas, or others will say of Christmas “it’s all about the children.”



Perhaps that’s because our childhood memories of Christmas are so powerful, and we try to recapture something of the wonder of Christmas from childhood. Remember that sense of wonder and awe catching sight for the first time of Christmas decorations and lights, trees and stockings filled with gifts? Children seem to intuitively know that wonder, like laughter, is good for us. It is food for our soul.

At Christmas time our churches, with all their peace and traditions, allow us permission to wonder. To wonder about Christmas, to wonder about Jesus. Somebody once wrote, “I would rather have a mind opened by wonder than one closed by belief.”

Come to church this Christmas and you’re likely to hear that great Christmas reading from the Bible, John chapter 1 which also invites wonder. St John weds theology to poetry and in doing so opens the door of our hearts and minds to wonder... ***“In the beginning was the Word, and the Word was with God, and the Word was God.”***

It is poetic prose, prose with the soul of poetry, prose that, like poetry, packs layers of meaning in a word or phrase.

Those few words have inspired theologians to write books and musicians to compose music and artists to paint masterworks and they challenge all of us to wonder.

Albert Einstein is quoted as saying, “The most beautiful thing we can experience is the mysterious. It is the source of all true art and science. He to whom this emotion is a stranger, who can no longer pause to wonder and stand rapt in awe, is as good as dead; his eyes are closed.”

Christmas is often called the most wonderful time of the year. For some of us, it's actually the worst time of the year. For some of you, Christmas is a time of loss and disappointment. Christmas is a reminder of the words that can't be taken back and the wounds that still bleed. Because along with the gift of Christmas always comes the grit of life.. And if that's the kind of darkness that you're walking into in this season just remember that Christmas isn't the most wonderful time of the year because of what is happening around us now, but because of what happened 2000 years ago.

God entered the grit of life, born in poverty, in a stable, carried and nourished by a young and unprepared unmarried mother – light was always overcoming adversity.

It is not all about the children but all about a child. It's the time when the voice of God was heard once again in the cry of a baby and the darkness was pierced with the light of the world. The light of the world was not a religion, it was not a moral code, it was not a doctrine, it was a person, it was Jesus Christ. And darkness has still not overcome his light. This Christmas season may you allow a holy wonder to arise in your heart and mind and let there be the light of Christ in your life.

Peace be with you. Lawrence

## Rota for Sidespersons

8th December	SONIA RICKMAN & PAT TAYLOR
15th December	DON PERRITT & DAVID DODGSON
17th December	ANN JACKMAN
19th December	GERRY & ANNE RAWCLIFFE
22th December	TREVOR & HELEN EASTES
24th December 2pm	SONIA RICKMAN & PAT TAYLOR
4pm	PCC
11.30pm	PCC
25th December	TBC
5th January	DAVID AND ANN JACKMAN

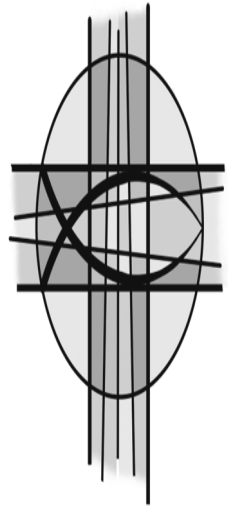
## Sunday Church Services

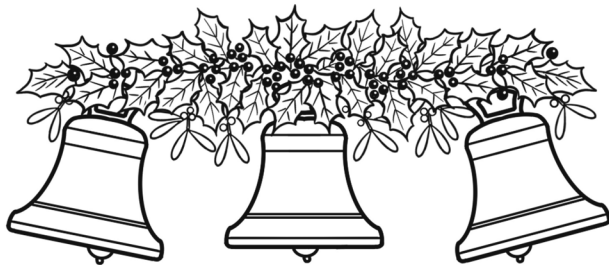
Weekly Church Services are as follows unless advertised separately:

9.30am Holy Communion at  
St. Mary's Rydal

11.00am Sunday Celebration at  
St. Oswald's Grasmere

Taize Prayer is every first Sunday at  
7.00pm at St Mary's Rydal





## Music Notes

Christmas is always a time for singing and music, and this year will be no exception, with concerts and carol services taking place up and down the county. At Grasmere the service of Candlelit Carols will take place on Thursday 19th December at 6.00 pm, and everyone is invited to come and take part in this magical occasion. Details of other services are given elsewhere in this magazine.

As in previous years, Grasmere Glee will be providing musical entertainment at Allan Bank on Sunday afternoons 1st and 8th December.

Keswick Choral Society's Festival of Christmas Music will be on Tuesday 10th December at 7.30 p.m. in St John's Church, Keswick, and Ambleside Choral Society is performing on Saturday 14th December in St Mary's Church.

January is usually quieter from a performing point of view, although it will be a good time to progress the planning of our summer Music at Grasmere concerts and the activities of St. Oswald Voices.

*Ian Hare*

## Grasmere School News



GRASMERE SCHOOL

Half way through...? Grasmere 400!

What we think we know so far:

Education in Grasmere was begun in 1625, in The Rectory, when the Rector of the time educated '12 scholars'. In 1685 money was raised to build a school, in the grounds of the church (now the Gingerbread Shop). There are bequests between then and the early 1800s, when Thomas Benson gave enough money to build the current building and school house, which was carried out over a few decades.

Next year we will be celebrating this 400 year legacy, and looking forward to the next 400 years!

We have a lot of exciting plans, many of which involve our community. We are using it as an opportunity to look back at how things used to be over the last four hundred years, and to think about how we want things to be in for four hundred years into the future. That's why we're calling it 'half way through'. There has been such a lot of change... and yet some constants. What is worth protecting? What do we want to change?

Here are some of our planned 'projects':

- Researching the history of the school – oral history, searching the archives, using the school log-books
- Making a film – Remember our Nativity? Well, here we go again...
- Story telling – so many tantalising tales...
- Fundraising to make our school premises fit for the next four hundred years...

How to be involved?

We would love people to get involved with:

- tree planting, vegetable growing and bee keeping
- historical research
- fundraising for the school's future
- and lots more things as the year progresses!



If you are interested in any of these activities, please get in touch with me, Jo Goode, Headteacher on 015394 35313 or email me at [head@grasmere.cumbria.sch.uk](mailto:head@grasmere.cumbria.sch.uk).

Whilst reading the old log books, I've already come across a couple of things it could be good to revive. In the early 1900s 'Mr Hayes' and 'Mrs Henderson' use to provide compost, pots and bulbs for the children to have an annual bulb growing competition, and then act as judges in the spring. We're sending the children home with bulbs in pots this week. If anyone would like to pay for the bulbs (£60) then they can join Will Bovington (who has donated compost and pots) in judging the flowers at the end of March!

The village flagpole used to be in the schoolyard. There are references to it in the log book, and we have photos. Wouldn't it be fun to have an easily accessible flagpole at school again! The flagpole on St Oswald's is really important, but having one at school would enable the village to fly a flag on all sorts of community occasions, both formal and informal, and would give the children an important role within their community, as custodians of flags. Would anyone be able to sponsor a flag pole and / or flags?



It's all going to be such a lot of fun, and a wonderful opportunity for the children and everyone to find out more about our community's past, and plan for its future together.

Huge thanks to Wordsworth Grasmere, for helping us to start amassing historical evidence, and to all our parents and other community members who have already become enthusiastically engaged.

*Jo Goode Headteacher*



## **Grasmere Fellowship**

Our final meeting for 2024 is on December 5th for a talk given by Alan Cleaver, who has spoken to us previously on the Corpse Roads. This time Alan conjures up the spirit of Cumbria's Christmas past with a look back at some of the customs and traditions of yesteryear including Grasmere's Christmas carol, delivering the Christmas post, snow pancakes and a Christmas ghost story. Alan is the author of 'A Lake District Christmas'.

This year we are holding our annual lunch on January 30th at the Grasmere Hotel at 12.30 for 13.00. Friends are welcome to come along. Menus and booking forms are available from Marguerite.

Our first speaker for the year on January 16th is Mark Hatton who has previously spoken to the WI here. This time his subject will be the Borrowdale Wad Mine. So come and hear the Lake District Graphite story.

Subscriptions still remain the best buy at £12 but guests are always welcome at £3 a meeting. Best afternoon tea bargain in Grasmere!

*David Dodgson*

## Grasmere and Cumbria Weather



Over many parts of southern and central Britain, September was the wettest on record, however, in Cumbria, it was mainly fine and dry. The month opened with cool north westerly winds, but pressure built to the north of the UK on the 4th. and the next few days were warm and sunny under light easterly winds. Temps. exceeded 72.F. with Keswick recording a high of 79.F. on the 6th. Temps. fell sharply on the 8th. with the weather becoming more unsettled on the 12th. Then on that night, the weather cleared and we were treated to another spectacular show of the northern lights. Clear skies led to a widespread frost ( - 2.C.) on the 13th., which incidentally was the earliest September frost recorded since 2019. Heavy, constant drizzle enveloped Grasmere on the 14th. and 15th. Was this a sign of heat? Yes, cloudless, sunny conditions followed for the next week, with glorious sunshine and temps. above 70.F. However, from the 23rd., cool north easterlies dominated with heavy rain and wintry showers. Temps. were near average with cold spells early and late, balancing the warm spell mid month. Rainfall amounts were mostly below normal, with just 47% of normal being recorded here in Grasmere. Across Pennine areas, the month was much wetter, with Warcop receiving 145% of its average rainfall. It was the driest September for 9 years in Ambleside, and the driest for 10 years in Grasmere. It's no surprise that it's been a drier than average month, as the dominant wind direction for Sept. was east north easterly. The Met. Office has released the storm names this Sept. for 2024- 2025. Why they have selected the names aren't obvious, but some are a problem to pronounce! Ashley, Bert, Conall, Darragh, Eowyn, Floris, Gerben, Hugo, Izzy, James, Kayleigh, Lewis, Mavis, Naoise, Otje, Poppy, Rafi, Sayuri, Tilly, Vivienne, Wren. Pronunciations: Darragh ( Da- ra) Eowyn ( Ay-oh-win) Naoise( Nee-sha) Otje ( o-t-jh-eh) Sayuri( sah-yoo-ree). Let's hope they're not using them all! Sunshine data. Brampton 122.6 hours. Shap 118.3 hours. Ambleside 106.5 hours. Wettest Sept. day 14th. 19.2 mm. ( 0.76 in.)

Total for month 98.8mm. 3.89 in. Last year 14.13  
in. Sept. av. 8.24 in. Rain days to date ( end Sept.)  
190. Last year 187.



October began with a cold, easterly wind in charge, bringing cloudy conditions, brief sunshine and light drizzle at times. On the 5th. the sun ejected the largest solar flares seen since 2021. On the 6th. the wind veered south westerly with heavy thundery showers. However after a dark, dreary day on the 6th. conditions greatly improved on the night of the 7th. enabling people to see the aurora yet again. Heavy showers persisted on the 8th. and 9th. Then pressure again on the 10th. bringing a welcome sunny day, and to cap it all, the aurora borealis appeared on the Thursday night, with the most spectacular, brilliant display seen over northern Britain for many years. A rough guide to the colours and heights. Nitrogen blue, up to 60 miles high, Nitrogen purple above 60 miles, Oxygen green up to 150 miles, Oxygen red above 150 miles. Sunny periods developed on the 14th. after a sharp frost ( -3. C.). Then two dark, dreary days followed with heavy rain, and over two and a half inches recorded. Misty, murky days followed, then pressure rose on the 18th. bringing welcome sunshine. However, Storm Ashley arrived on the night of the 19th. with gale force winds and torrential rain. Fortunately, it was short lived and no major problems were noted in Grasmere. Cloudy days followed with girt heavy showers and quite a chill in the air, with south westerlies in charge. From the 28th. pressure rose, but no sunshine followed, only cloud and drizzle, hence anticyclonic gloom. Whenever there is fog, there is little or no rain. A summer fog is for fair weather, a winter fog will freeze a dog.

Wettest October days 15th. and 27th. 32.4 in.

Total for month 240mm. 9.44in. Last year 8.86 in.

Rain days to date ( end Oct.) 211 Last year also 211,

Rainfall to date ( end Oct.) 2334.6.mm. 91.91 in. Last year 92.72 in.

Daily rainfall measurements in Grasmere from 1946 -1956 Meadow Brow  
1957-1973 Woningworth 1974-1976 School House 1977-1990 Lakeing  
Oct.1991- Oct. 2024 Tanner Croft.

Not too long until the shortest day !

Peter Bailey



Grasmere Players

Thursday

19th December

Grasmere  
Village Hall

7pm

for complimentary mulled  
wine and nibbles.

All welcome.

There will be a collection for  
charity in the interval

We wish you all a

**MERRY CHRISTMAS**



# Advent and Christmas 2024

*At St Oswald's Church unless otherwise stated*

## **Blue Christmas**

Tuesday 17th December at 10am

A small informal service for anyone who finds Christmas is a difficult time of year. There will be readings, music for reflection and a chance to light a candle.

## **Grasmere Primary School Nativity**

Wednesday 18<sup>th</sup> December at 2pm

Everyone is welcome to come to this year's school nativity production.

## **Carols by Candlelight**

Thursday 19th at 5.30pm

Traditional lessons and carols in a beautiful candlelit church. Atmospheric.

Mulled wine served after the service.

## **Beer & Carols at The Good Sport**

Sunday 22<sup>nd</sup> December at 5pm

Bringing the village together to sing some favourite Christmas carols,  
accompanied by a small brass group and a pint.

## **Crib service**

Tuesday 24<sup>th</sup> December at 2pm

Begin your Christmas celebrations with a service for all ages retelling  
the Christmas story. Treats for everyone.

A Christmas gift for all children.

## **Outdoor Carols at Moss Parrock**

Tuesday 24<sup>th</sup> December at 4pm

Carols and community in the fresh air.

Accompanied by village brass players

## **Midnight Mass**

Tuesday 24<sup>th</sup> December at 11:30pm

The first Eucharist of Christmas

## **Christmas Day Family Holy Communion**

Christmas morning at 11.00am.

## Grasmere WI

In October we celebrated the successful completion of our amazing GWI Lakes and Tarns Challenge. After ticking off visits to the 16 Lakes and an incredible 235 Tarns we had a grand finale on Grasmere lakeshore. We paddle boarded, swam and toe dipped in true GWI style and popped a cork or two in celebration.



Our **October** meeting saw a packed Village Hall enjoy a fabulous afternoon with the brilliant entrepreneur Maria Benjamin from Dodgson Wood farm at Nibthwaite talking about development and diversification in farming, including her famous Lake District tweeds and soaps. It was a great shopping afternoon too. We had a wear purple theme to support Hospice week and our charity the wonderful St Mary's Hospice. We raised over £150 for the Hospice. We had a fantastic day at Levens Hall and our Art Appreciation group had a day trip to the Art Galleries of Edinburgh and an art viewing at Wordsworth Grasmere with the world renowned Turner expert Dr Cecilia Powell.



Our **November** meeting was all about making Christmas floral decorations with the amazing Joan Bentley, such an interesting and fun afternoon. The Christmas floral decorations were raffled off and this raised over £200 for St Mary's Hospice. We hosted the Federation Quiz with teams from across the Federation. We did GWI proud! We ran such a wonderful event and then one of our teams went and won the Quiz too! We had a great fun afternoon at Allan Bank learning how to crochet. It was a great start but we've got a long way to go! Our Book / Culture Group went to Zefferellis to see 'The Out-run' film and met up with the author Amy Liptrot, (interviewed by Grasmere's very own Polly Atkin) after reading her book in September.

**Looking ahead-** We are all very excited about our upcoming day trip to Christmas at Chatsworth and in **December** we are really looking forward to our GWI Christmas party at Tweedies, it'll be a great festive fun afternoon. We'll be joined at our Christmas Book Group celebrations at Allan Bank by storyteller, Jessie Mc Meekin and we'll be posting suggestions for next year's book list. And we have a Pamper Day at Kendal College in **December** too!

We're setting off the New Year with a great start with our first meeting of 2025 on **Thursday 9 January 2pm** at the Village Hall with the brilliant local Personal Trainer Ursula Brendling hosting a New Year, New You !!!

**Also ...**

In addition to our fabulous monthly meeting programme, there's so much more going on at GWI, here's just a few of our extra activities. Our monthly Book / Culture Group at Allan Bank is a huge success, with a packed attendance and lively discussion each month in Wordsworth's study. We also have our very popular monthly rambles, Art Group meetings, weekly GWI Strong kettlebell classes with our fabulous local personal trainer Libby Dixon (we're getting stronger every week!). New GWI groups for 2025 include Garden and Craft Groups and weekly Indoor Games including Badminton.

There's so much going on at GWI!

Finally, as always, a huge thanks to all our 82 members for making Grasmere WI such a vibrant, friendly and fun group.

*Louise Sykes President Grasmere WI*

T: 07860299658 E: clsmailbox@icloud.com



# Wordsworth

## GRASMERE

We are very much looking forward to Grasmere Residents Afternoon on Friday 20 December. Drop into Dove Cottage for mulled wine, mince pies and carols from 3-5pm. Everyone who lives or works in Grasmere is very welcome! When you visit the Museum you will notice a new, large oil painting in Gallery 4. This 1849 painting of Grasmere by James Baker Pyne has recently been gifted to the Trust by Professor Stephen Wildman in memory of Robert Woof. When you visit our special exhibition you will also see a new beautiful display of watercolours by John Warwick Smith, several of which were presented this year by the Curwen family through the Acceptance in Lieu Scheme. In October the Grasmere WI Art Group enjoyed a private view and in-depth exploration of these paintings with Cecilia Powell and Stephen Wildman.



The next event in 'Go to the poets, they will speak to thee', our online poetry reading series hosted by Kim Moore, takes place on 11 December with Mimi Khalvati. Join us online for a Romanticism-themed webinar! Explore the treasures of the Wordsworth Trust's collection with Jeff Cowton, Principal Curator, and Michael McGregor, Robert Woof Director on 5 December in 'As you know': A treasury of tales.

Little Wanderers, our creative play sessions for under 5s, takes place every Friday morning in the Learning Space. Free for Grasmere families.

Discover Poetry with Polly Atkin and Dove Cottage Poets, our poetry reading and writing groups, continue to take place on Zoom and as a hybrid meeting respectively. For more information and how to book, please visit [wordsworth.org.uk/event-directory/](http://wordsworth.org.uk/event-directory/)

## Wordsworth Grasmere Festive Opening Dates

We are open as normal Tuesday–Saturday, 10am–4pm, through to the end of Saturday 21 December.

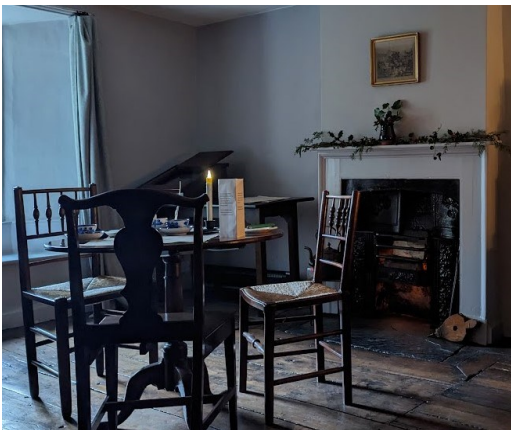
Closed: Sunday 22 December–Thursday 26 December.

Open: Friday 27 December–Sunday 29 December, 10am–4pm.

Closed: Monday 30 December.

Open: Tuesday 31 December–Saturday 4 January, 10am–4pm.

Our annual closed period takes place from Sunday 5 January–Monday 20 January and we will reopen 5 days a week from Tuesday 21 January. During this time we thoroughly clean and inspect of Dove Cottage to prepare it for the year ahead, undertake cleaning and maintenance work throughout our site, and conduct annual staff training.



Entry to Dove Cottage, the Museum and exhibitions is free to Grasmere residents and employees of Grasmere businesses. We hope to see you soon!

*Hannah Catterall,  
Events Officer,  
Wordsworth Grasmere*

## Grasmere Book Group



October's book group discussed Hilary Mantel's *Beyond Black*, a novel about Alison Hart, a psychic medium touring small towns around the commuter belt of London in the 1990s and early 2000s. First published in 2005, the novel was longlisted for the Booker Prize and shortlisted for the Women's Prize.

Some of the group found *Beyond Black* dark, or hard to digest both for its worldly and otherworldly traumas. Some found it both enjoyable and terrifying. The depictions of human connection and the sheer entertainment aspect of the psychic's performances are in stark contrast to the vivid hauntings and darkness foreshadowing grim revelations from Alison's childhood. As one reader said, the further it goes on the weirder it gets! Another felt it had some really good passages of writing but it could have been shorter.

Conversation circled around how writing about the "now" is liable to feel dated two decades on, Mantel's reputation and variety of writing and whether the novel was speculative fiction (and what that might mean).

November's meeting was on Kate Beaton's Canadian comic book memoir *Ducks: Two Years in the Oil Sands*. Beaton tells of her time spent in Alberta's oil sands, paying off her student loan with a very well paid but environmentally and personally damaging job. The experience has stuck with Beaton, leading her to question how such jobs degrade people as much as the landscape.

The group had a wide-ranging conversation. Some wondered about Beaton's choice to focus on conversations with many panels consisting of talking heads and there were different feelings about how readers gained a sense of place for the industrial landscape of the tar sands.

Upcoming meetings:

DECEMBER 12th – Ursula K Le Guin, *The Left Hand of Darkness* (1969)

JANUARY 9th – No set book at present, as tradition dictates we will spend this meeting deciding on our reading for 2025! Suggestions very welcome.

Book group meets online at 8pm on the second Thursday of every month. All are welcome to join... do email us and we can send you a Zoom link. All book group books are available from Sam Read's at 10% discount off the r.r.p.

Polly and Will - [dr.will.smith@me.com](mailto:dr.will.smith@me.com)

## Books Needed

If you have any spare books please pass them on to St Oswald's, we would be very happy to receive them .

The church has a second hand bookshop which raises money for church activities.

Please leave any books you have at the back of the church near the bookstall.

Thank you  
Grasmere PCC



## CALENDAR - DECEMBER

1	<b>Sunday Celebration Communion</b>	St Oswald's	11am
	Advent Lunch	Village Hall	12.30
	Grasmere Glee		
	<b>Christingle</b>	Allan Bank St Oswald's	1.30pm 3.30pm
5	Fellowship	Village Hall	2.30pm
7	Christmas Fair	Village Hall	All Weekend
8	<b>Sunday Celebration- All age Worship</b>	St Oswald's	11.00am
	Grasmere Glee	Allan Bank	1.30-3.30pm
12	W.I.	Tweedies	12noon
	Grasmere Book Group	Zoom	8pm
13	Polaris The Snow Bear	Village Hall	6pm
14	Fools Gold	Village Hall	7.30pm
15	<b>Sunday Celebration- Communion</b>	St Oswald's	11am
17	<b>Blue Christmas</b>	St Oswald's	11am
18	Nativity Grasmere School	St Oswald's	2pm
19	<b>Candle Light Carols</b>	St Oswald's	5.30pm
	Christmas Readings	Village hall	7pm
20	Residents' Afternoon	Wordsworth Grasmere	2pm
22	<b>Sunday Celebration- Beer and Carols</b>	St Oswald's Good Sport St Oswald's	11am 5pm 2pm
24	<b>Crib Service</b>		4pm
	<b>Carols on the Green</b>		11.30pm
	<b>Midnight Mass</b>	St Oswald's	
25	<b>Christmas Day</b>	St Oswald's	11am
29	<b>Sunday Communion</b>	St Oswald's	11am

## CALENDAR - JANUARY

5	<b>Sunday Celebration - All age Worship</b>	St Oswald's	11am
8	Village Hall AGM	Village Hall	7pm
9	Grasmere WI	Village Hall	2pm
	Book Group	Zoom	8pm
12	<b>Sunday Celebration Communion</b>	St Oswald's	11am
16	Fellowship	Village Hall	2.30pm
	Panto	Village Hall	7
17	Stargazing	Allan Bank	5.30pm/8p
	Panto	Village Hall	m 7
18	Panto	Village Hall	2 & 7 pm
19	<b>Sunday Celebration - All age Worship</b>	St Oswald's	11am
25	Burns Night Supper	Village Hall	TBC
26	<b>Sunday Celebration - Communion</b>	St Oswald's Grasmere	11am
30	Fellowship Lunch	Grasmere Hotel	12.30pm

## Grasmere Village Society

The seasons turn and as the mellow fruitfulness of Autumn becomes the less poetic season of Winter we can reflect on a busy year for the Society.

Thanks are due to members of the committee who have met regularly throughout the year and have been active in a wide variety of projects and tasks. A big thank you to all the local tradesmen who have given their time and expertise to help with practical work in and around the village. Thanks also to all our members, not least for your financial support, which allows us to invest in the village. I must have at least one reader of this column because last month I gave as an example of expenditure the cost of maintaining the village defibrillators. Simon Hey, the membership secretary, was pleased to receive a generous donation shortly thereafter. Thank you gentle reader. New members or donations are always welcome and Simon can be contacted at [simonhey4@gmail.com](mailto:simonhey4@gmail.com) or 015394 35067.

A well attended Memorial Day service was held in St. Oswald's on Sunday November 10th, led by our new rector, Lawrence Basham. We then gathered at the war memorial in Broadgate Meadow for a further short service. A wreath was laid on behalf of the Society. It is still very sobering to hear the roll call of young men from this village who sacrificed their lives for our futures.

This year we have consolidated the village emergency plan and almost finished the village Jubilee walk. We have implemented a Neighbourhood Watch scheme. We have planted trees, removed alien species, picked litter, maintained and replaced benches, maintained the bus shelters, the Wordsworth fountain and the defibrillators. Recently a working party gave the Pinfold a much overdue tidy up. We have scrutinised planning applications, kept an eye on the lake and lakeshore and the river Rothay. As Christmas approaches we are hoping to provide a Christmas tree on Moss Parrock.

Whether you live in Grasmere or are visiting, we wish you a

**Happy Christmas and a peaceful and prosperous New Year.**

*Nick McCraith (Chairman)*

## Grasmere Village Hall

Autumn has been a busy time at the Hall. The Needle Felted Herdwick Sheep workshop was very popular and everyone who attended went home with a seriously cute sheep! Over 100 people came to dance and sing along with the fabulous Abba tribute band “Voulez Vous”. There was some serious dressing-up ... congratulations to Gary for winning the costume contest! Everyone enjoyed the Jamaican Evening with delicious food from Yardies, and the comedy play “The Plot Thickens” from the Just Some Theatre Company was a great success. The weekly Warm Spot Coffee & Chat sessions are continuing through the Winter at 10.00 to 12.30 every Wednesday. Everyone is welcome.



The Christmas Fair takes place on Saturday 7 and Sunday 8 December, with a range of stalls selling local and seasonal products. Visit Father Christmas in his Grotto - £2.50, payable on the day - and don't miss the Grand Christmas Raffle draw at 4.00 pm on Sunday. Raffle tickets are on sale now at Barney's Newsbox, Grasmere Pharmacy and other businesses around the village. There are some fabulous prizes, donated by local businesses. This year, the Hall's share of raffle proceeds will go towards Internal Decoration. There is plenty more going on during the festive season:

Friday 13 December, 6.00 pm: “Polaris the Snow Bear”, a seasonal children's show involving puppets and songs to entertain all generations. “A boy and a bear embark on the most amazing of winter journeys. Their search for snow takes them on a magical quest around the globe and shows them the true meaning of friendship”. Recommended for all ages from 4+. Tickets £8, child £6, family £24, from [www.highlightsnorth.co.uk](http://www.highlightsnorth.co.uk) or contact the Hall on 015394 35628 or [enquiries@grasmerehall.org.uk](mailto:enquiries@grasmerehall.org.uk)

Saturday 14 December, 7.30 pm: “Fool's Gold - The Christmas Show”. Following last year's successful visit, this musical duo are back with songs and stories on a Yuletide theme, featuring well-known seasonal classics and carols plus the hidden stories behind them. A fantastic and fun festive show for all the family. Adults £12, Child £6, Family £30, tickets from [www.ticketsource.co.uk/Grasmere-village-hall-co-ltd](http://www.ticketsource.co.uk/Grasmere-village-hall-co-ltd) or contact the Hall.





## Grasmere Village Society

Reg. Charity Number 506443

# Grand Christmas Raffle

Proceeds will go to Grasmere Village Hall for Internal Redecoration  
and Grasmere Red Squirrel Group for the Conservation of Red Squirrels.

Draw to be held at the Grasmere Village Fair on Sunday 8<sup>th</sup> December at 4pm

### Prize Donations Kindly Promised to Date

- Forest Side** - Overnight Stay, 8-Course Dining Menu and Breakfast for 2
- Bridge House Hotel** - Two Night stay and Cream Tea for 2
- Grand at Grasmere** - Overnight Stay with Breakfast for 2
- Victorian House Hotel** - Overnight Stay for 2 at Georgian House in London
- Moss Grove Organic** - Overnight Stay in Executive Room with Breakfast for 2
- Daffodil Hotel and Spa** - Overnight Stay with Breakfast for 2
- The Swan** - Overnight Bed and Breakfast Stay for 2 at any Inn Collection Group Property
- Grasmere Hotel** - 3 course Dinner for 2 with a Bottle of House Wine
- Raise View** - Overnight Stay for 2 in Helm Crag Room
- Lanty Slee's** - Meal for 2 with Drinks at The Wayside Pulpit and Stickle Barn
- Jumble Room** - Dinner for 2 with a Bottle of Wine
- The Herdy Company** - Gift Hamper
- Glen Rothay Hotel** - Voucher for a 2- course Bar Meal for 2 at the Badger Bar
- Goody Blake's Restaurant** - Voucher for a Meal for 2
- Tweedies Bar & Lodge** - Sunday Lunch for 2
- Libby Dixon** - Pilates Voucher, **The Yan** - £50 Voucher
- Crafts and Antiques Gallery** - Gift Hamper
- Cedar Manor, Windermere** - Afternoon Tea for 2, **Karen Healy - Green's Cafe** - Christmas Cake
- Lakes Art Gallery** - £50 Voucher, **Mountain Hi** - £50 Gift Voucher
- Craghoppers** - Voucher for a Fleece, **Osprey Gifts & Interiors** - Country Scenes Draft Excluders
- Baldrys** - Lunch for 2, **Freda & Ray Café** - Voucher for Cream Tea for 2
- Grasmere Distillery** - Grasmere Gin, **The Red Gecko** - £30 Gift Voucher,
- The Chocolate Cottage** - Fudge and Chocolates
- Peter Rabbit and Friends** - Book and Games, **Emma's Dell** - Voucher
- Heidi's Café** - £20 Voucher, **Lucia's Coffee and Bakehouse** - £20 Gift Voucher
- Grasmere Weavers** - Needle Felting Kit, **Grasmere Pharmacy** - £20 Voucher
- Beck Steps Gallery** - Framed Botanical Picture, **Sam Reads Bookseller** - Voucher
- Grasmere Gingerbread** - 170th Anniversary Gift Box
- Wordsworth Museum** - Gift Bag, **Grasmere Co-op** - TBC,
- Barney's Newsbox** - Jigsaw, **Heaton-Cooper Studio** - TBC,
- Maggie Bielawska** - Festive Hamper, **Grasmere Gather** - Voucher,
- Beck Allans Self-Catering** - TBC, **Rose and Ralph Dog Shop** - TBC,
- Rothay Garden Hotel** - TBC **Christina Watts** - Harry the Lamb Soft Toy

Thursday 19 December: Grasmere Players present their annual Christmas Readings .See poster on page 17

Tuesday 31 December, 7.30 pm: New Year's Eve party. You won't want to miss this! Tickets £35 are on sale at Barney's Newsbox or at [www.ticketsource.co.uk/grasmere-village-hall-co-ltd](http://www.ticketsource.co.uk/grasmere-village-hall-co-ltd) .Ticket price includes finger buffet, unlimited drinks, live music from local covers band "Grasmere Rocks!", disco and glass of fizz at midnight. Over 18s only.

Thursday 16 – Saturday 18 January: Look out for Grasmere Players' Panto "Jack & the Beanstalk", to be performed on three nights with a matinee on Saturday afternoon. Tickets will be available nearer the time.

Saturday 25 January: We will be repeating last year's hugely popular Burns Night Supper & Ceilidh. Tickets will be on sale nearer the time.

Thank you to those people who have signed up to support us by using Easy-fundraising - a fantastic online platform that enables you to raise free donations with every purchase you make. There are over 8,000 participating retailers, ranging from your food shop at Tesco, booking a holiday with Booking.com to taking out insurance on Compare the Market. Sign up here: <http://efraising.org/rWHiZtGHZI> *Pam Moreland*

**Grasmere Village Hall Company Ltd**

**We are pleased to announce that the AGM will take place on**

**Wednesday 8th January 2025**

**Grasmere Village Hall**

**7.00 pm.**

**All Grasmere residents are welcome to attend.**

**Following the official business of the meeting you are invited to join the Trustees for refreshments and a discussion on the hall and how it can best serve your and the community's needs**

## CHRISTMAS FLOWERS IN ST OSWALD'S

We would be delighted if you would like to sponsor a plant that will be used to decorate the church over the Christmas period.

Once again we are choosing to display cyclamens, not only beautiful but also hardy in cold conditions!

Please fill in the slip below and return to :

**St Oswald's or leave in the church letterbox no later than the 14th December.**



Each plant will have a label with your dedication printed on it.

You are welcome to collect the plants from church from Sunday 7th January

.....  
I /We would like to donate £... with the following dedication: (max 50 words)

.....  
.....  
.....  
.....  
.....  
.....

Donation of £10 per plant please. Cheques payable to Grasmere PCC

Name.....

Tel No:.....

## Christmas on the Farm

Christmas Day at Brimmer Head is the same as any other day. Animals come first as they all have to be fed, mucked out, and watered. We don't mind the snow it's ice that causes the greatest problems as pipes freeze up, take ages to thaw out and even cause burst pipes.



We always tend to have a roast turkey for dinner and Christmas pudding (made by Debbie ) then it's back out again at tea time to feed cows and check everything is okay for the night. We'll be having a quieter Christmas this year as Emma is working and Megan is away so it will be just the three of us.

Essential maintenance on the farm continues to take place. The small barn is being repaired and is nearly all down ready to built back. You can see our progress on the way up to Far Easedale.

On reflection this year, has been okay. It's fair to say that the weather has been awful and we are concerned about recent government changes to farming which have been highlighted nationally. There has to be a realisation that without farms and farmers there will be no food!

Happy Christmas from the Powell Family!



# ALLAN BANK

Allan Bank has so much to offer at this time of year. The house is decorated from the 25th November, the fire is on and on days when we are entertaining there is mulled wine. With wonderful woodland walks do come and visit us.

This Christmas Grasmere Glee provide us with one of the highlights of the year with seasonal songs and carols with audience participation .This is the perfect way to start the festive season. Join us on 1st and 8th December  
1.30pm-3pm

Also on the 8<sup>th</sup> of December we have live seasonal jazz with a saxophone duet from 11-12.30pm.

Start the New Year by coming along two events in January.

## **Family Stargazing Evening**

17 January, 5.30-7pm

Explore the wonders of the winter night sky and learn fun facts about stars, planets and galaxies.

BE

Over 12's £5, Child 6-12yr £2.50, Child under 6yr Free

## **Stargazing Night**

17 January, 8-10.30pm

Discover more about the winter night sky and learn about the stars, planets and galaxies in our universe.

BE

Adults £15, Child over 12yr £5



**Storytelling at Allan Bank – Tuesday 18th & Thursday 20<sup>th</sup> February, 11am & 2.30pm (30 min sessions)**

Join us at Allan Bank for a story telling session in our second-hand bookshop, with wintery tales and a cup of hot chocolate to keep you cosy. Free with standard admission

Stargazing events are continuing through the early part of 2025.

**Family Stargazing Evening**

1 February, 5.30-7pm

Explore the wonders of the winter night sky and learn fun facts about stars, planets and galaxies.

BE

Over 12's £5, Child 6-12yr

£2.50, Child under 6yr

Free



**Community Dark Skies Night**

28 March, 7-10pm

To help celebrate the Grasmere Switch Off we will be opening the grounds of Allan Bank after dark to allow visitors to enjoy this special date in the year where you can enjoy a true dark skies experience.

Join us for a night outside under the dark skies. Bring your own telescopes and binoculars. If the clouds stay away we can go in search of stars, distant galaxies and planets.

We look forward to welcoming you to Allan Bank!

*Allan Bank Team*

*015394 35143*



**Carols with  
Grasmere  
Glee**

**1st & 8th December**

**1.30-3pm**

**Allan Bank**

**Come and enjoy yuletide  
songs and carols  
We look forward to seeing  
you there!**



# KESWICK CHORAL SOCIETY

Tuesday 10 December 2024 7.30 pm  
St John's Church, Keswick CA12 4DD

## Festival of Christmas Music

— — — *MESSIAH extracts* — — —

— — — *HOLST: CHRISTMAS DAY* — — —

CAROLS FOR CHOIR

AND AUDIENCE

with KICK-BRASS Training Brass Band

Tickets £13 in advance  
from Bookends, Eventbrite or  
choir members, £15 on the door  
Under 12s free

Wendy Sharrock - contralto  
Jordan English - organ  
Ian Hare - conductor



## **Tombola Prizes needed!**

This year's tombola at the Christmas Fair in December is for  
St. Mary's Hospice, Ulverston.

If you have anything that is worthy of being a prize, and you do  
not need , please consider gifting it.

Please contact Carrie Taylor on 07584036544 or  
carriegrasmere@aal.com to arrange pick up

St. Mary's Hospice is here for us all. You never know when you will  
need their services. They are a charity needing at least £9,000  
per DAY to operate.

Wouldn't it be grand if we could support them for just one day!

### **Dementia Support**

at

**Ambleside Parish Centre**

on

**Tuesday 17<sup>th</sup> December**

**10.30 – 11.30**

**Drop in for a coffee and a chat**

**Next meeting: Tuesday 21st January**

**10.30 – 11.30**

More details 015394 34172

barratt573@btinternet.com

## **Tackling your finances - small changes with big effects**

Sometimes tackling your finances can feel overwhelming, but small steps can make a big difference, and planning ahead helps you feel in control of your spending. A quick way to understand where your money goes is to keep a spending diary for a week, then make a simple weekly or monthly budget. Have regular money check-ins where you review your finances to see what's working and if anything needs adjusting. Prepare for predictable future expenses, like council tax, car costs, TV licence, Christmas and birthday presents, or upcoming big events like moving house. They all need to go in the budget. Putting a bit aside each month can make these expenses easier.

There are also unpredictable costs, like a boiler or car breakdown. Even a small amount set aside each month for an emergency fund can give you peace of mind. It's worth considering insurance, such as home or pet insurance, which can offer financial security in case of unexpected events. Making sure your credit report is accurate can help improve your credit score and make it easier to borrow money or access financial products and services in the future. The Citizens Advice website tells you how you can check your credit report for free. If you are worried about falling into debt, or already can't pay your bills, talk to South Lakes Citizens Advice. They can advise you on any benefits, grants or financial support that you might be eligible for, and help you to deal with your debt.

***Free, confidential advice and help is available from South Lakes Citizens Advice How to access:***

- ***Call 015394 46464 (9.30am – 2pm, Monday – Friday)***
- ***Drop in sessions at Wainwright's Yard, Kendal, LA9 4DP (10am – 2pm, Tuesday and Thursday)***
- ***Adviceline: 0808 2787 984 (9am - 5pm, Monday – Friday)***
  - ***email advice via the submission page on our website***  
**[www.southlakescab.org.uk](http://www.southlakescab.org.uk)**

## **Cultural Landscapes Series**

'Nan Shepherd and the power of walking' -

Tuesday 3rd December at 6.30pm.

Dr Kerri Andrews, the editor of *Nan Shepherd's Correspondence*, will discuss what Shepherd's newly-published letters tell us about the power of walking in art and life. She will also consider what the letters have to say about Nan's most famous work, *The Living Mountain*, and how we might better understand the importance of Nan's lifelong love affair with the Cairngorm Mountains.

The talk is free but you are requested to book a place at the event. For further details and to book, please see the event page here: <https://www.ticketsource.co.uk/cultural-landscapes/nan-shepherd-and-the-power-of-walking/e-aevoox>

# CONTACTS

**St Oswald's Parish Church**, Church Stile, Grasmere LA22 9SW

**Rector:** Rev Lawrence Basham

lawrencebasham@gmail.com

**Church Wardens:** Ann Jackman and Gerry Rawcliffe

07826663590 grasmerechurchwarden@gmail.com

**Treasurer:** Richard Beskeen 015394 35131

treasurer.grasmereandrydal@gmail.com

**Organist:** Mr Ian Hare MA Mus B

017684 83886 ian.c.hare@outlook.com

**Church Website:** A Church Near You

## Other Church Contacts

**Rydal St. Mary's:** Churchwarden, Pam Coates 015394 32449

**Methodist Minister:** Grace Cauldwell 07341960506 / 01229 583196

Grace.southlakes@gmail.com

**Roman Catholic Priest:** Fr. Ajish Kumpukkal, Mater Amabilis Church,

Ambleside 015394 33027

**Quaker: Friend In Residence:** Terry Winterton, Glenthorne, Grasmere

Tel: 015394 35389 info@glenthorne.org

**URC Minister:** The Rev. Martyn Coe, Carver Church, Ambleside

01539 533223

**Central Lakes Mission Community** Rev. John Dixon

015394 36301 jjcedixon@btinternet.com

# wordsworth

GRASMERE

Dove Cottage • Museum • Woodland  
Garden • Café • Shop • Family Activities



**Open Tuesdays - Saturdays**

Don't forget that admission is free for Grasmere residents  
and employees of Grasmere businesses